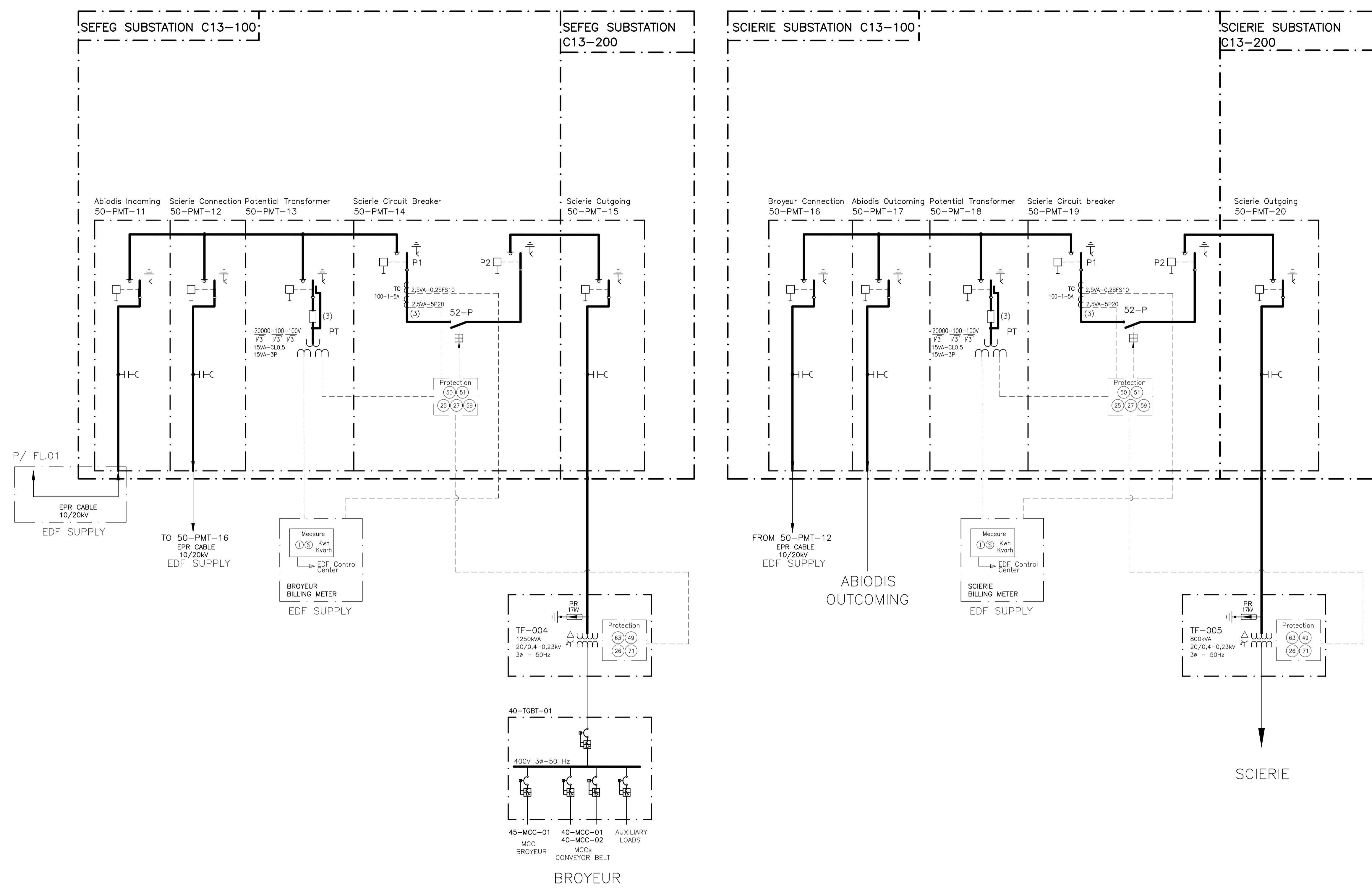


- NOTES**
- IN ORDER TO PROTECT THE ELECTRICAL SYSTEM STABILITY, THE CHARGES "WOOD CHIPPER/BROYEUR" WILL BE AUTOMATICALLY DISCONNECTED, IN CASE OF STEAM TURBINE LOAD DROP OF MORE THAN 25%.
 - GROUNDING TRANSFORMER SHOULD BE CONNECTED ONLY WHEN ERDF SYSTEM IS DISCONNECTED.

REV.	DATE	TYPE	EXEC.	VERIF.	APPROV.	REVIEW DESCRIPTIONS
01	31/10/19	C	R. GASPAR	A. MENEZES	F. BAGGIO	FOR KNOWLEDGE
00	04/04/19	J	GUSTAVO M.	A. MENEZES	F. BAGGIO	APPROVED

EXPEDITION TYPE	(A) PRELIMINARY	(B) FOR APPROVAL	(C) FOR KNOWLEDGE	(D) FOR QUOTATION	(E) FOR CONSTRUCTION	(F) AS PURCHASED	(G) AS BUILT	(H) CANCELED	(J) APPROVED

		ABIODIS - BIOMASS UNIT	
		AREA: THERMOELECTRIC POWER PLANT SPECIALTY: ELECTRICAL SYSTEM MEDIUM VOLTAGE SUBSYSTEM: GENERAL	
RESPONSABLE	DATE	SCALE	TITLE
DESIGNED: FABRICIO L.	14/08/18	N° SNEF BRASIL:	SINGLE-LINE DIAGRAM
EXECUTED: FABRICIO L.	14/08/18	N° CLIENT:	1216-H056-01-DIE-04751
CHECKED: A. MENEZES	14/08/18	PAGE:	1
APPROVED: F. BAGGIO	14/08/18	FOLLOW:	2
		FORMAT:	A1
		REVIEW:	01



REV.	DATE	TYPE	EXEC.	VERIF.	APPROV.	REVIEW DESCRIPTIONS
01	31/10/19	C	R. GASPAR	A. MENEZES	F. BAGGIO	FOR KNOWLEDGE
00	04/04/19	J	GUSTAVO M.	A. MENEZES	F. BAGGIO	APPROVED

REVIEW						
EXPEDITION TYPE	(A) PRELIMINARY (B) FOR APPROVAL (C) FOR KNOWLEDGE	(D) FOR QUOTATION (E) FOR CONSTRUCTION (F) AS PURCHASED	(G) AS BUILT (H) CANCELED (J) APPROVED			

		ABIODIS - BIOMASS UNIT				
		AREA: THERMOELECTRIC POWER PLANT SPECIALTY: ELECTRICAL SYSTEM: MEDIUM VOLTAGE SUBSYSTEM: GENERAL				
RESPONSABLE	DATE					
DESIGNED: FABRICIO L.	14/08/18					
EXECUTED: FABRICIO L.	14/08/18					
CHECKED: A. MENEZES	14/08/18					
APPROVED: F. BAGGIO	14/08/18					
SCALE:		N° SNEF BRASIL:	N° CLIENT:	PAGE:	FORMAT:	
		1216-H056-01-DIE-04751		2	A1	
				FOLLOW:	REVIEW:	
				-	01	